



## Automator

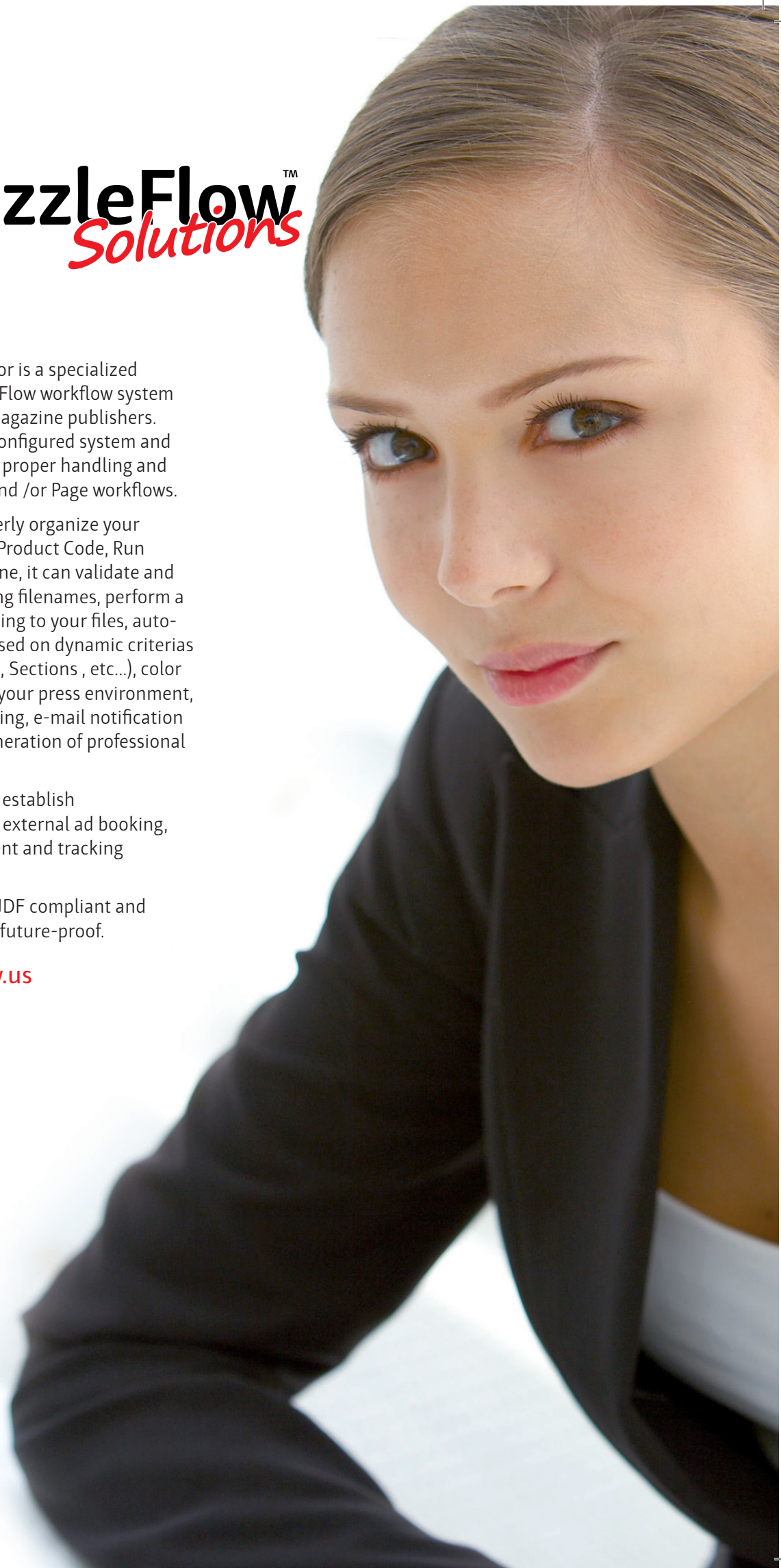
PuzzleFlow Automator is a specialized version of the PuzzleFlow workflow system for newspaper and magazine publishers. Automator is a pre-configured system and web interface for the proper handling and tracking of your Ad and /or Page workflows.

Automator will properly organize your pages and/or ads by Product Code, Run Date, Section and Zone, it can validate and rename your incoming filenames, perform a high-level of auto-fixing to your files, auto-resize documents based on dynamic criterias (including Pub Codes, Sections , etc...), color correct your files for your press environment, handle color remapping, e-mail notification of events and the generation of professional preflight reports.

PuzzleFlow is able to establish communication with external ad booking, layout, management and tracking systems.

PuzzleFlow is highly JDF compliant and therefore, extremely future-proof.

[www.puzzleflow.us](http://www.puzzleflow.us)






## Automator

The system is ready to validate your incoming files, correct them for common prepress issues, notify you of problems, auto-resize incoming documents based on any number of dynamic parameters, and automate the archiving and purging of your files. Whether you print your files in-house or outsource your printing, Automator is the digital front-end you need to stay ahead.



### Why Automator?

- Need your top operators to be able to spend their time on your top customers?
- Shaking your head everytime you see someone working on something you know can be done by a computer?
- Wish your production files just worked ?
- Wish your production system automatically followed the specs of your ad booking data?
- Wish your production system could communicate and make decisions with your ad booking, tracking and layout systems?
- Wish your system just knew to automatically process / send files (ads or pages) to other systems and companies based upon your rules and needs ?
- Wish your production system could be viewed from any web browser ?



## Features

- Automatic preflighting with pinpoint notification of problem areas
- Over 150 preflight checks
- Automatic size verification of ads and pages
- Automatic resizing and size fixing of ads and pages by ad type, Q type, product name, or advertiser
- Accepts Postscript, PDF, EPS, XPS, Tiff and JPG as input formats
- Automatic generation of all needed file formats for web, archiving and other purposes (pdf, eps, tif, jpg, gif, png, etc...)
- Will make PDF ads work with your pagination system, with no need for any upgrades to your pagination system
- Automatic color management
- Automatic color remapping and color conversion
- Full integration with ad booking and tracking systems
- Automatic notification of problems
- Full logging of all activities
- Database driven system
- Automatic proofing / exporting of ads and pages at proof and approval stages.
- Automatic renaming, copying, archiving, purging, ftp'ing, e-mailing of any ad or page based on any desired schedule or processing rules.
- 100% web based interface where you can approve, reject, proof, export, view history, and view all processing details
- Automatic fixing of: Overprints, Knockouts, Hairlines, 4 color blacks, Transparency, Missing Fonts, RGB, Lab, DeviceN and Indexed colors, Fragmented images and gradients, Change separated files into composite, Spot color issues
- Automatic image enhancement
- Ability to split or recombine pages
- Ability to convert fonts to curves
- Ability to double-burn, stamp, or barcode anything
- Automatic PDFx standard file generation, certification and delivery
- Ability to trap all color files
- Automatic name verification of ads and pages
- Split spreads, Remove crop-marks, Auto-Recenter pages
- Automatic image extraction and insertion into ads or pages

*'The thing I find most appealing about PuzzleFlow is the ease of use. Flashlight Digital does all the configuration work and makes updates to the production stream in a quick and easy manor. Once configured, it just processes pages. Little or no intervention is required and the results are always on target. This process is a tremendous help for a paper our size (11,000 daily). And it could only be more beneficial to larger papers since it scales so well. As a result of our experience with the product other papers within the chain are also looking at PuzzleFlow as a solution.'*

Nathan Fahlenkamp,  
IT Manager at the Baxter Bulletin



## Time for automation

PuzzleFlow Workflow is a comprehensive automated solution that organizes the production and handles the entire production process from job acquisition, to final output.

The PDF based system includes conversion, preflight, document optimization, correction, imposition, personalization, image enhancing, color management, and trapping tools.

Integrated JDF/JMF allows the system to connect with other applications and devices. The simple user interface enables the design and launch, of even complex workflows within minutes.

PuzzleFlow goes beyond the traditional concepts of a prepress production system and becomes a prepress operating system.

## ACCHSH

ACCHSH prides itself on over ten years' experience in designing and creating PDF-related software. The company combines IT and the computer programming knowledge with experience in the prepress to provide complete and automated solutions for the printing industry.

[www.acchsh.com](http://www.acchsh.com)



Flashlight Digital is a focused distributor and developer of unique, innovative, and affordable pre-press solutions and products. We are the exclusive North American distributors of the Hyphen ImpoProof digital imposition proofing system and the ACCHSH PuzzleFlow workflow system and components.

[www.puzzleflow.us](http://www.puzzleflow.us)

